

Configuração do acesso à base de dados

Após as instalações do MS SQL Server 2000 (versão *developer*) e do *service pack 4* e após se reiniciar a máquina, deve-se verificar se os serviços (*services*) foram devidamente iniciados, nomeadamente deve-se verificar se os serviços “SQL Server” e “SQL Server Agent” estão a executar. O programa **SQL Server Service Manager** pode ser usado para iniciar/parar os serviços associados ao servidores da base de dados.

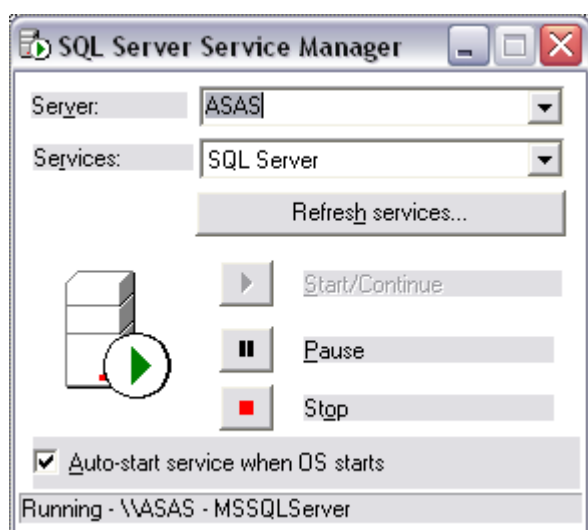


Figure 1 Start/Stop SQL Server service

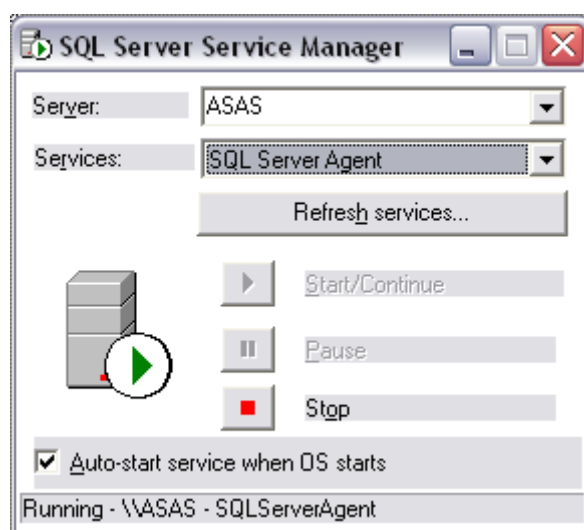


Figure 2 Start/Stop SQL Server Agent service

A administração do servidor de bases de dados pode ser efectuada a partir da aplicação **SQL Server Enterprise Manager**.

Numa primeira fase é necessário configurar o acesso ao servidor. As figuras seguintes ilustram esta tarefa.

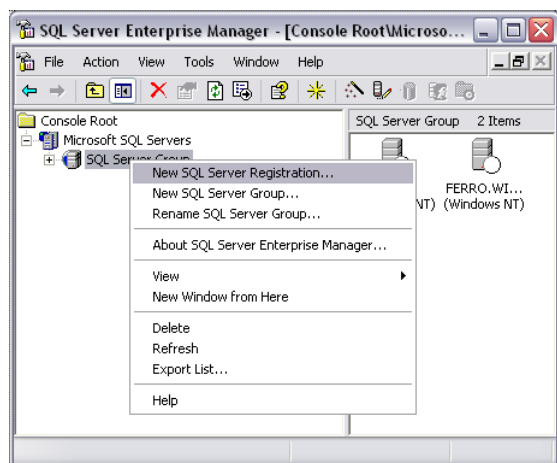


Figure 3 SQL Server registration



Figure 4 SQL Server registration wizard

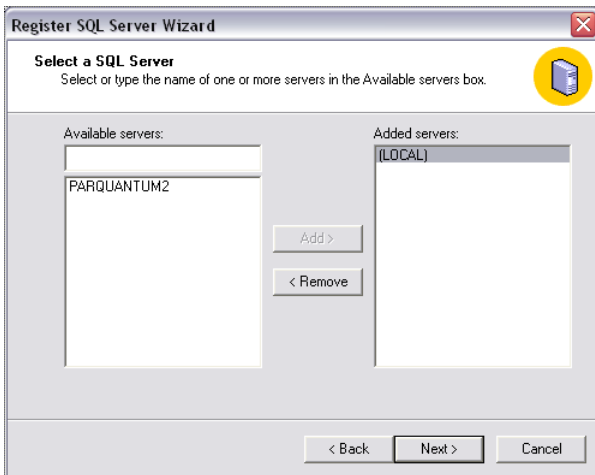


Figure 5 Select a SQL Server. Use (local) for the local machine

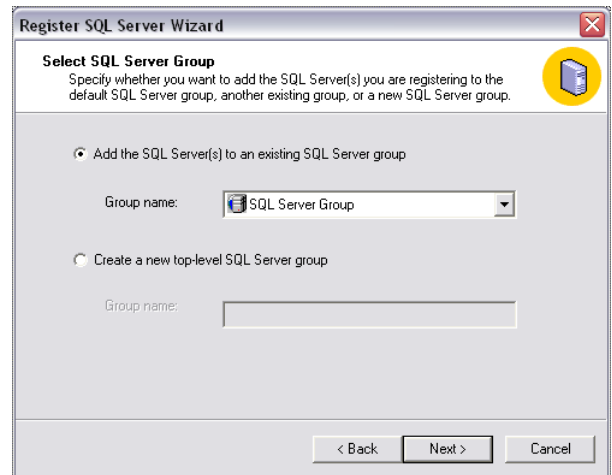


Figure 8 Select SQL Server Group

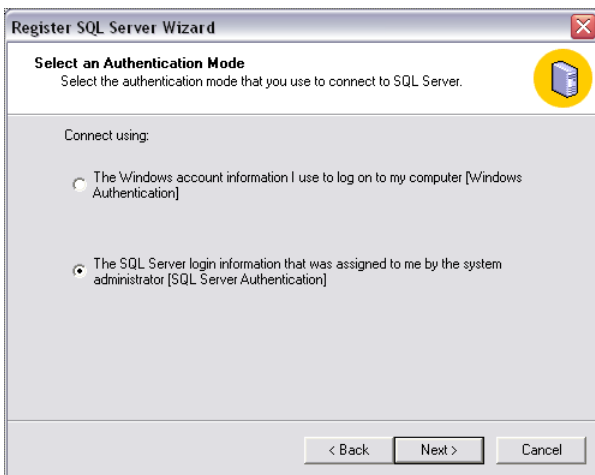


Figure 6 Select SQL Server Authentication



Figure 9 Finish the SQL Server register

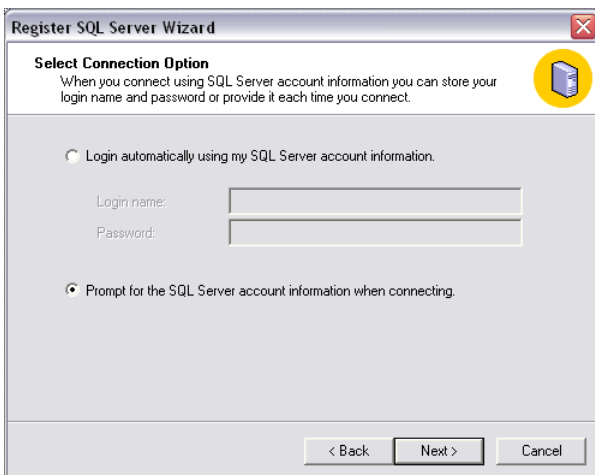


Figure 7 Select "prompt for the SQL account"

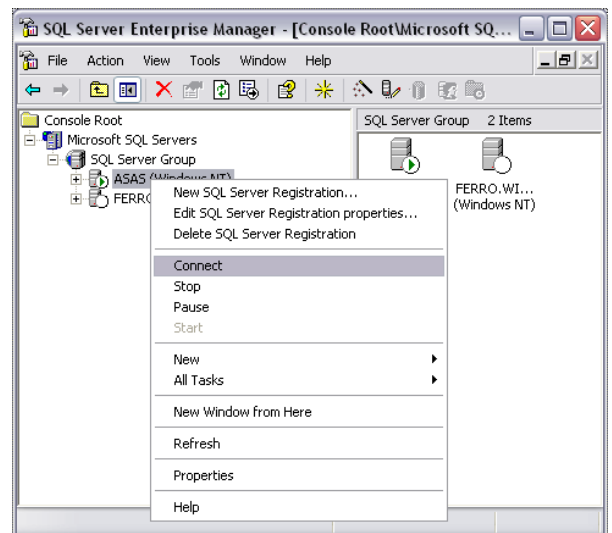


Figure 10 Connect to a SQL Server



Figure 11 Connect to the SQL Server (local)

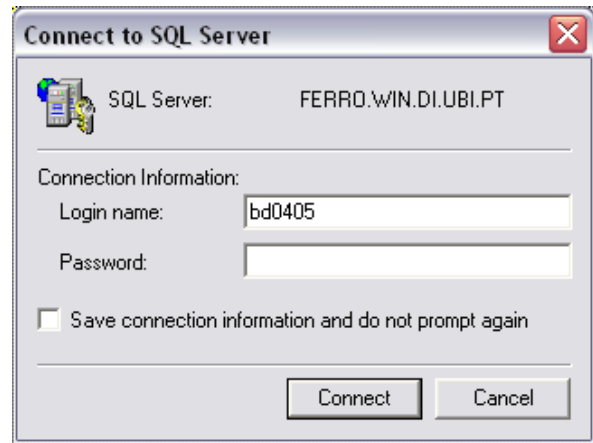


Figure 12 Connect to the SQL Server (remote)

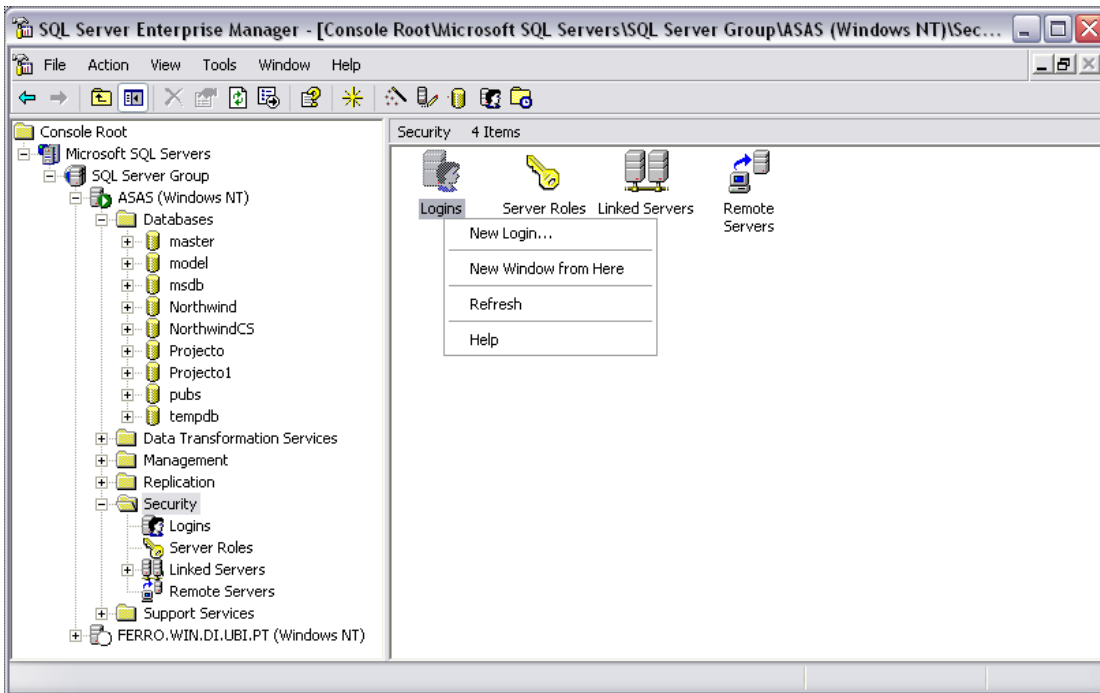


Figure 13 Create a login for a (local) database

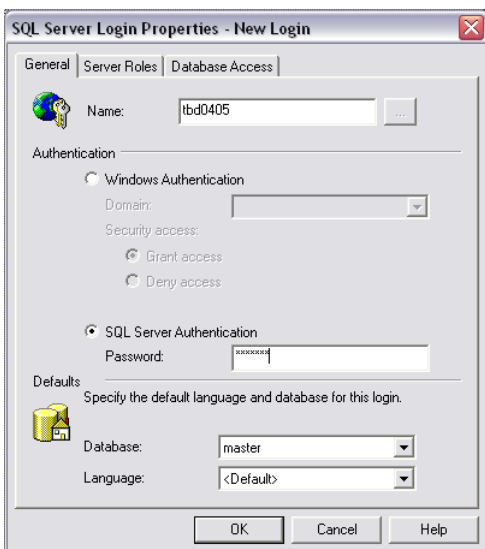


Figure 14 Choose a login name and SQL Server Authentication

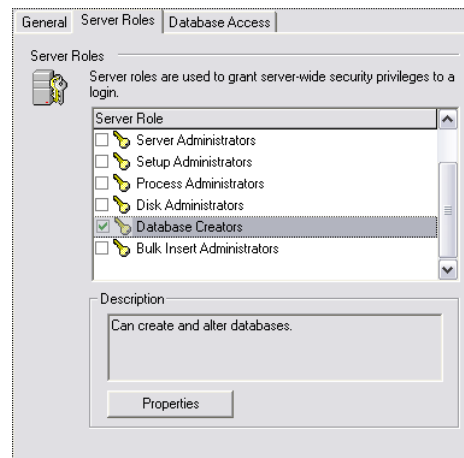


Figure 15 Choose roles to grant to the new login

Uma vez criados os *logins* necessários (e respectivos privilégios) pode ser usado o programa *SQL Query Analyzer* para interrograr as bases de dados existentes (exemplo) ou para “executar” scripts.

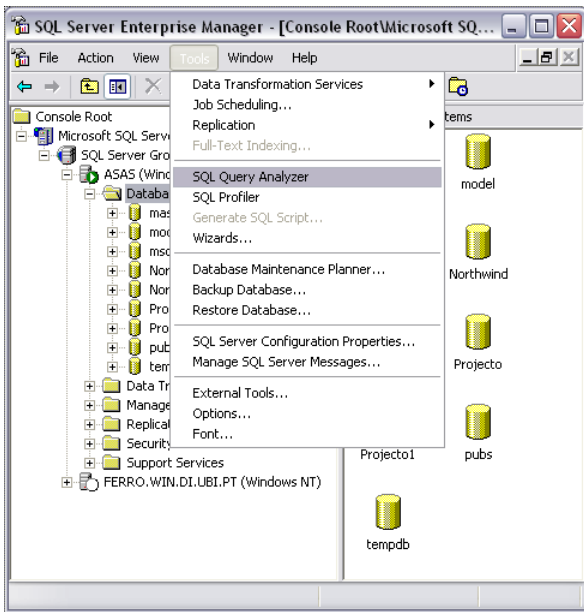


Figure 16 Iniciar o SQL Query Analyzer



Figure 18 Estabelecer uma ligação a um servidor (local ou remoto)

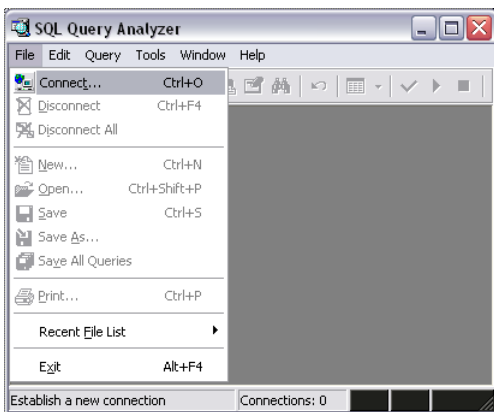


Figure 17 Estabelecer uma ligação a uma BD

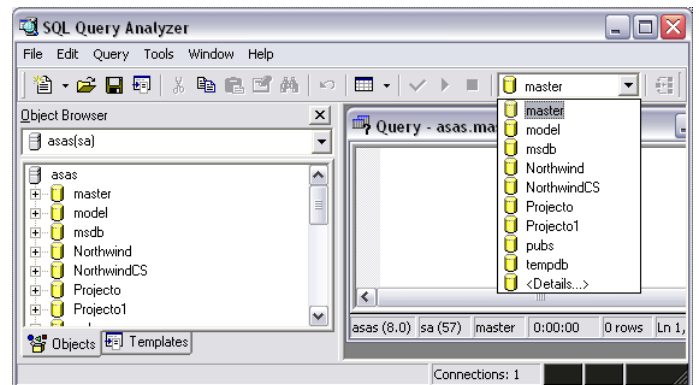


Figure 19 Seleccionar a base de dados sobre a qual se vai trabalhar

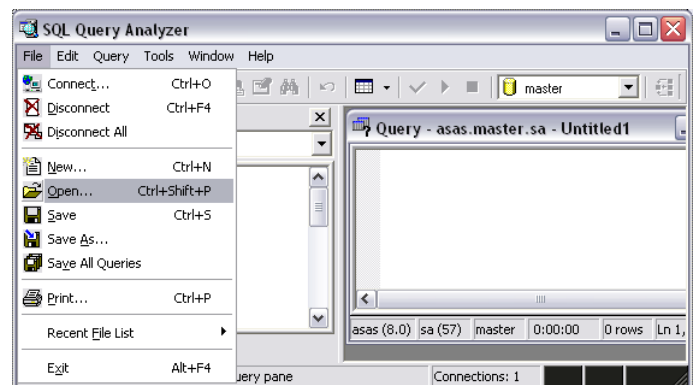


Figure 20 Abrir um ficheiro de script

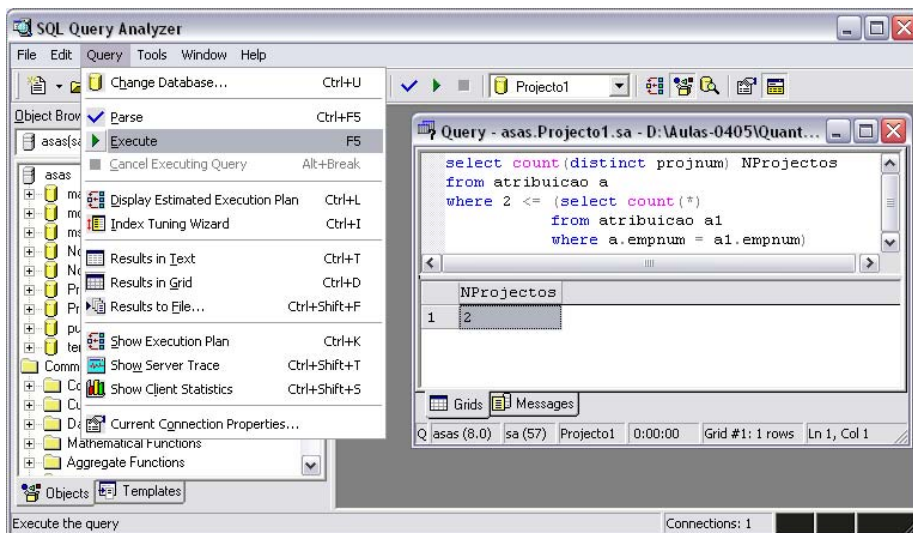


Figure 21 Executar scripts e visualizar os respectivos resultados

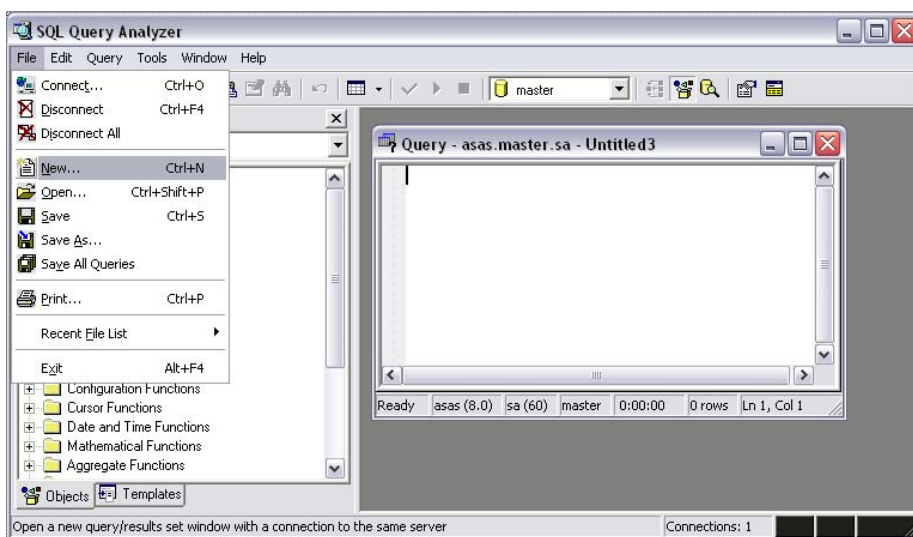


Figure 22 Aceder às opções do menu File/New...

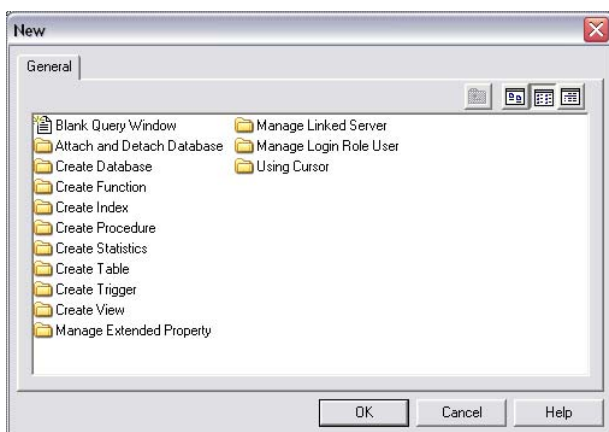


Figure 23 Opções disponibilizadas pelo menu File/New...