

Plataformas e Serviços X-Ops (16233)

L1 – Azure DevOps

1. Criar conta no Azure DevOps Services
2. Descobrir o Azure DevOps
3. Opções de utilizador
4. Funcionamento das organizações e projetos
5. Propriedades das organizações e projetos
6. Componentes do Azure DevOps
 1. Boards
 2. Repos
 3. Pipelines
 4. Test plans
 5. Artifacts



Nuno Pombo

Edit profile

ngpombo@ubi.pt

Universidade da Beira Interior

🌐 Portugal

✉ ngpombo@ubi.pt

Visual Studio Dev Essentials

Get everything you need to build and deploy your app on any platform.

[Use your benefits](#)

Azure DevOps Organizations

Create new organization

▼ [dev.azure.com/ngpombo](#) (Owner)

Projects

 [Hello_World](#)

[New project](#)

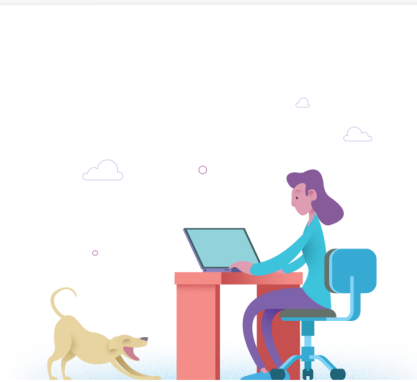
Actions

[Open in Visual Studio](#)

- Hello_World +
- Overview
- Summary
- Dashboards
- Wiki
- Boards
- Repos
- Pipelines
- Test Plans
- Artifacts

Hello_World

Private Invite NP



Welcome to the project!

What service would you like to start with?

- Boards
- Repos
- Pipelines
- Test Plans
- Artifacts

[or manage your services](#)

Project stats



No stats are available at this moment
Setup a service to see project activity.

Members



N ngpombo

[New organization](#)

ngpombo

[+ New project](#)

[Projects](#) [My work items](#) [My pull requests](#)

[Filter projects](#)



Hello_World



[Organization settings](#)

- Project Settings**
Hello_World
- +
- General**
- Overview
- Teams
- Permissions
- Notifications
- Service hooks
- Dashboards
- Boards**
- Project configuration
- Team configuration
- GitHub connections**
- Pipelines**
- Agent pools
- Parallel jobs
- Settings
- Test management
- Release retention
- Service connections
- XAML build services

GitHub connections



Connect GitHub with Azure Boards

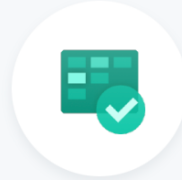
Link commits and pull requests to work items, and see the status of your development from within Azure Boards.

[Connect your GitHub account](#)

Alternative connection options

[Personal Access Token](#)

[GitHub Enterprise Server](#)



Sign in to **GitHub**
to continue to **Azure Boards**

Username or email address

Password

[Forgot password?](#)

Sign in

[Sign in with a passkey](#)

New to GitHub? [Create an account](#)

- Explore as ferramentas que compõem o Azure DevOps e proceda à sua descrição no *wiki* associado ao seu projeto.
- Descreva igualmente no *wiki* a aplicação selecionada para o trabalho prático de grupo.



